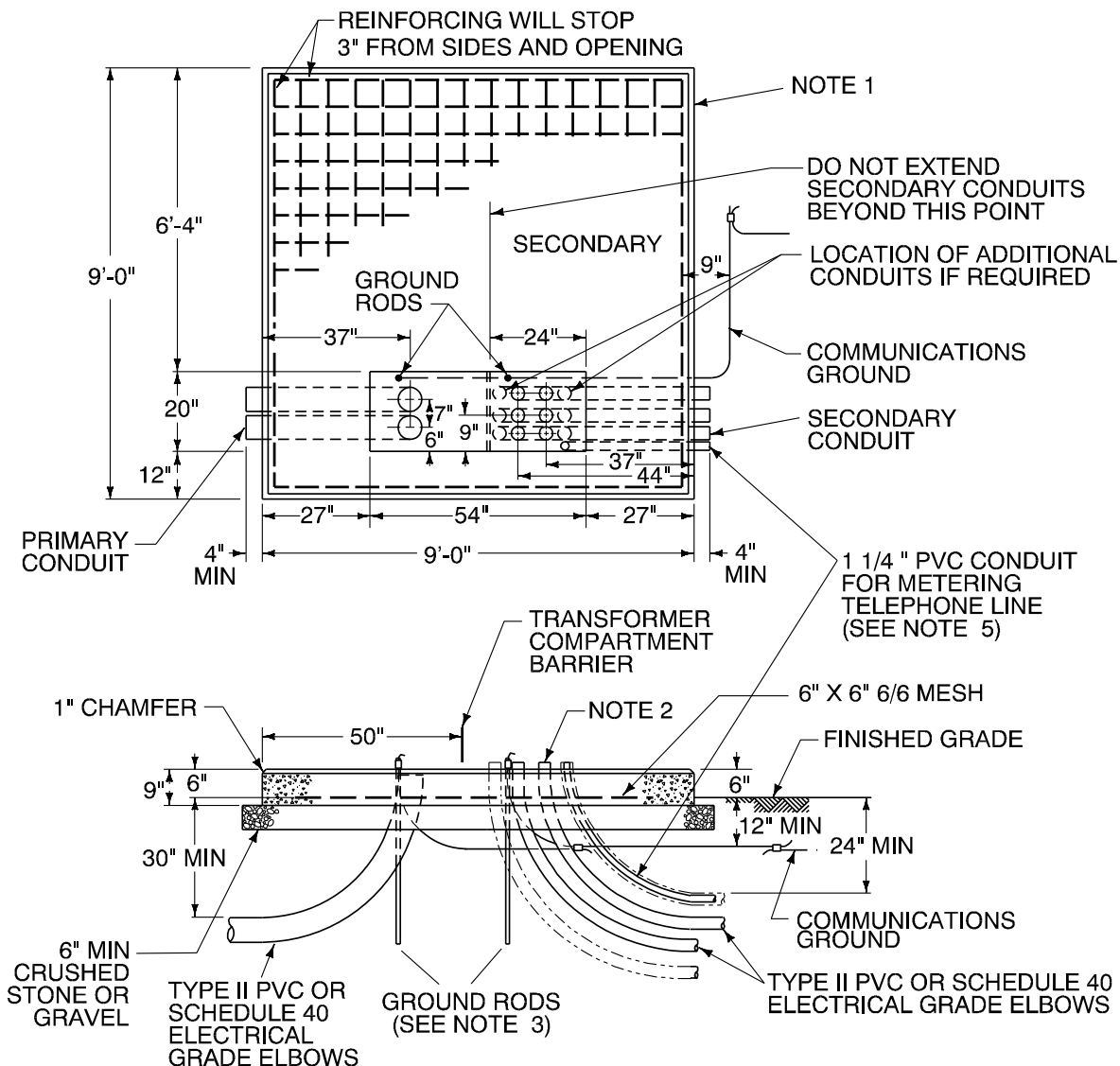


CONCRETE PAD FOUNDATION PAD-MOUNTED TRANSFORMER 750 TO 2500 KVA, THREE-PHASE, 12.5 KV & 34.5 KV HIGH SIDE

CONSULT COMPANY FOR DETAILS BEFORE INSTALLATION.



NOTES:

1. REFERENCE FIGURE 30 FOR CONCRETE PAD FOUNDATION, PAD-MOUNTED TRANSFORMER GENERAL NOTES.
2. SECONDARY CONDUITS SHOULD NOT EXTEND MORE THAN 2" ABOVE TOP OF FOUNDATION. PRIMARY CONDUITS SHOULD BE CUT OFF 2" BELOW TOP OF FOUNDATION TO ALLOW FOR TERMINATING THE CABLES.
3. **CUSTOMER** SHALL FURNISH AND INSTALL GROUND RODS AND GROUNDING CONNECTIONS. EXTEND GROUND RODS 2" ABOVE TOP OF FOUNDATION TO ACCOMMODATE GROUND JUMPER.
4. SEE FIGURE 25 FOR CLEARANCE FROM BUILDING WALL OR OTHER PARTS OF BUILDING.
5. EXTEND 1-1/4" CONDUIT TO LOCATION AT CUSTOMER'S BUILDING WHERE TELEPHONE LINE SERVICE CAN BE MADE AVAILABLE AT THE TELEPHONE DEMARCATION POINT (SEE SECTION 8.08).