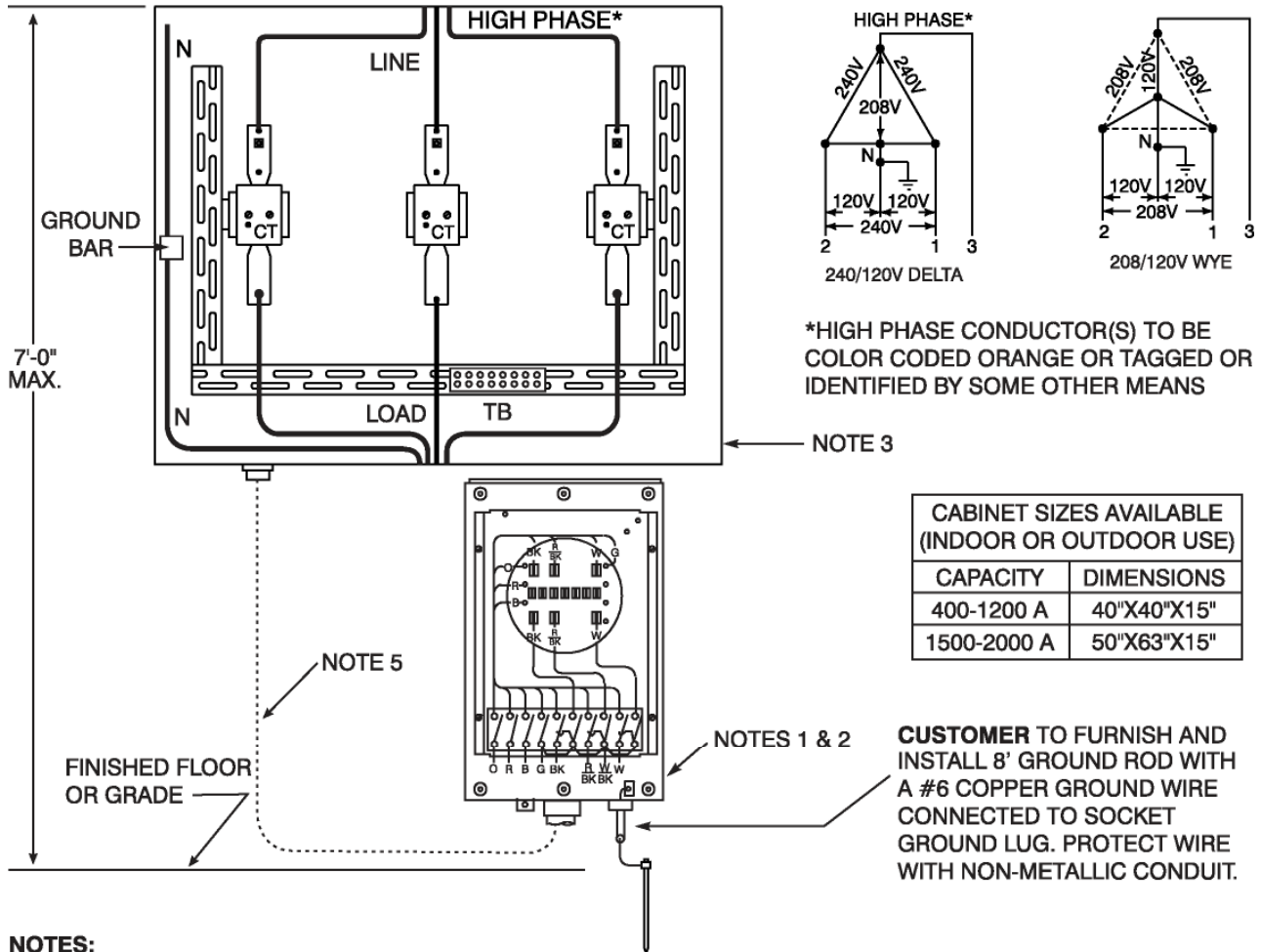


# TYPICAL TRANSFORMER-RATED METERING INSTALLATION CABINET-MOUNT 240/120 VOLT DELTA OR 208/120 VOLT WYE

**CONSULT COMPANY FOR DETAILS BEFORE INSTALLATION.**



**NOTES:**

- METER SOCKET LOCATION SHALL BE DESIGNATED BY COMPANY ON EXTERIOR OF BUILDING. MOUNTING HEIGHT 4'-0" TO 5'-6" TO THE TOP OF THE METER SOCKET.
- CLEAR SPACE OF AT LEAST 36" X 36", FREE FROM OBSTRUCTIONS AND IN LOCATION SUITABLE FOR METER MOUNTING SHALL BE PROVIDED.
- MAINTAIN 3 FOOT CLEAR WORKING SPACE IN FRONT OF CABINET.
- METERING PACKAGE WITH INSTRUMENT TRANSFORMERS AND METER SOCKET SUPPLIED BY COMPANY, INSTALLED BY **CUSTOMER**.
- 1-1/4" IMC OR RIGID METALLIC CONDUIT FOR RUNNING METER CABLE TO METER SOCKET (30' MAX. CABLE LENGTH) FURNISHED AND INSTALLED BY **CUSTOMER**. METER CABLE FURNISHED AND INSTALLED BY COMPANY.
- INHIBITOR COMPOUND** SHALL BE USED ON ALL ALUMINUM WIRE TERMINATIONS.
- CONDUIT FOR METER CABLE SHALL ENTER METER CABINET AT THE BOTTOM OR WITHIN 16 INCHES FROM THE BOTTOM ON THE SIDE OF THE CABINET.
- CUSTOMER** SHALL PROVIDE ACCESS (CABLE OR CONDUIT) TO TELEPHONE COMPANY FACILITIES (SEE SECTION 8.08).