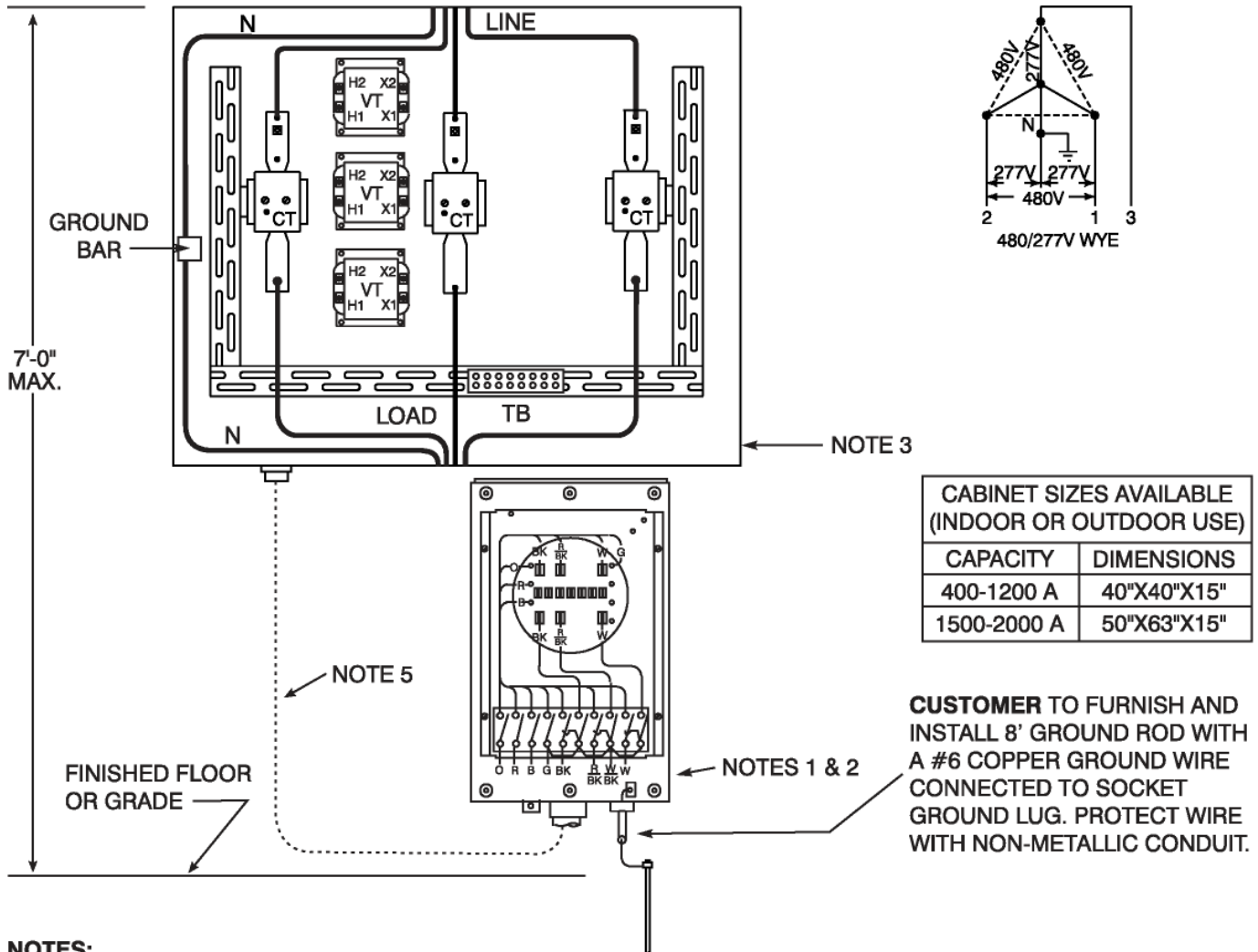


TYPICAL TRANSFORMER-RATED METERING INSTALLATION CABINET-MOUNT 480/277 VOLT WYE

CONSULT COMPANY FOR DETAILS BEFORE INSTALLATION.



CABINET SIZES AVAILABLE
(INDOOR OR OUTDOOR USE)

CAPACITY	DIMENSIONS
400-1200 A	40"X40"X15"
1500-2000 A	50"X63"X15"

CUSTOMER TO FURNISH AND INSTALL 8' GROUND ROD WITH A #6 COPPER GROUND WIRE CONNECTED TO SOCKET GROUND LUG. PROTECT WIRE WITH NON-METALLIC CONDUIT.

NOTES:

1. METER SOCKET LOCATION SHALL BE DESIGNATED BY COMPANY ON EXTERIOR OF BUILDING. MOUNTING HEIGHT 4'-0" TO 5'-6" TO THE TOP OF THE METER SOCKET.
2. CLEAR SPACE OF AT LEAST 36" X 36", FREE FROM OBSTRUCTIONS AND IN LOCATION SUITABLE FOR METER MOUNTING SHALL BE PROVIDED.
3. MAINTAIN 3 FOOT CLEAR WORKING SPACE IN FRONT OF CABINET.
4. METERING PACKAGE WITH INSTRUMENT TRANSFORMERS AND METER SOCKET SUPPLIED BY COMPANY, INSTALLED BY **CUSTOMER**.
5. 1-1/4" IMC OR RIGID METALLIC CONDUIT FOR RUNNING METER CABLE TO METER SOCKET (30' MAX. CABLE LENGTH) FURNISHED AND INSTALLED BY **CUSTOMER**. METER CABLE FURNISHED AND INSTALLED BY COMPANY.
6. **INHIBITOR COMPOUND** SHALL BE USED ON ALL ALUMINUM WIRE TERMINATIONS.
7. CONDUIT FOR METER CABLE SHALL ENTER METER CABINET AT THE BOTTOM OR WITHIN 16 INCHES FROM THE BOTTOM ON THE SIDE OF THE CABINET.
8. **CUSTOMER** SHALL PROVIDE ACCESS (CABLE OR CONDUIT) TO TELEPHONE COMPANY FACILITIES (SEE SECTION 8.08).