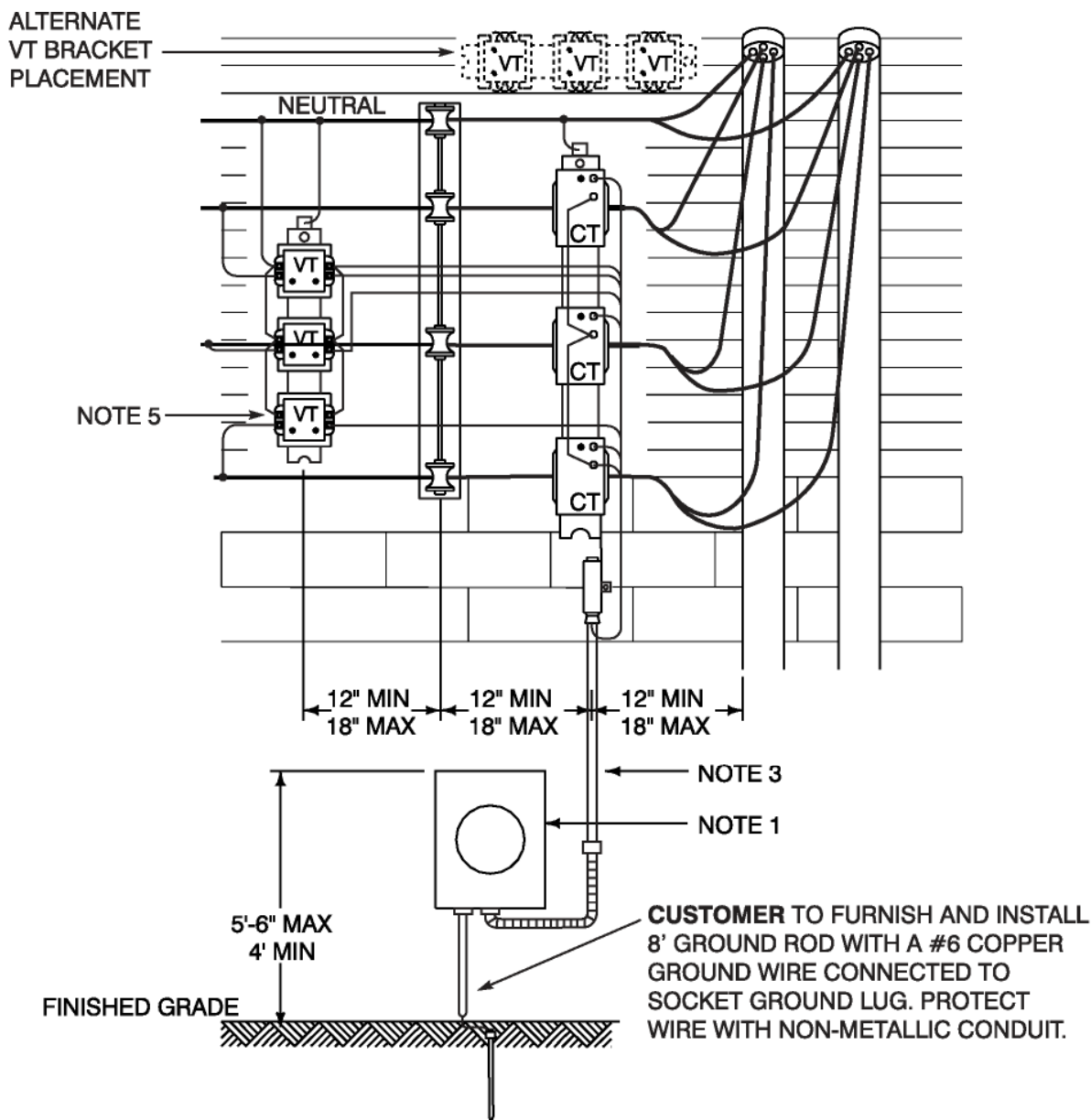


TYPICAL TRANSFORMER-RATED METERING INSTALLATION 600 VOLTS OR LESS - OUTDOOR OVERHEAD

CONSULT COMPANY FOR DETAILS BEFORE INSTALLATION.



NOTES:

1. METERING TRANSFORMER PACKAGE AND METER SOCKET SUPPLIED BY COMPANY AND INSTALLED BY **CUSTOMER**. NUMBER OF CURRENT AND VOLTAGE TRANSFORMERS WILL VARY WITH SERVICE TYPE.
2. SEE FIGURE 1 FOR CLEARANCES.
3. 1-1/4" IMC OR RIGID METALLIC CONDUIT FURNISHED AND INSTALLED BY **CUSTOMER**. METER CABLE FURNISHED AND INSTALLED BY COMPANY.
4. **INHIBITOR COMPOUND** SHALL BE USED ON ALL ALUMINUM WIRE TERMINATIONS.
5. VOLTAGE TRANSFORMERS REQUIRED FOR 480Y/277 VOLT SERVICE AND ARE TYPICALLY MOUNTED ON OPPOSITE SIDE OF SERVICE DROP POINT OF ATTACHMENT FROM CURRENT TRANSFORMERS.
6. **CUSTOMER** SHALL PROVIDE ACCESS (CABLE OR CONDUIT) TO TELEPHONE COMPANY FACILITIES (SEE SECTION 8.08).